

*3° grade*

## **Activities from march 18th to april 1st**

- Workbook: unit 2
- Student's practice kit: complete unit 2
- Download, print and complete the unit test.

Padre de familia: si tiene alguna duda escribir un mensaje por medio de la plataforma en Macmillan o un correo: [mariellacanas@colegiofatima.edu.sv](mailto:mariellacanas@colegiofatima.edu.sv).

**God bless you!**



**Unit Test**

Name: \_\_\_\_\_

**Reading**

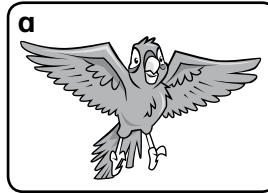
Class: \_\_\_\_\_

Score:

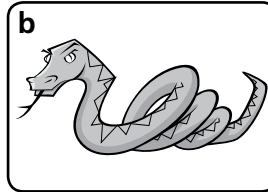


**1 Read and match.**

**1** This animal has a long tail, sharp teeth and claws.  C



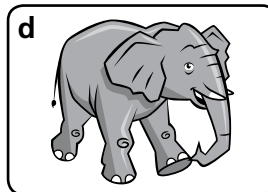
**2** This animal has a shell. It's very slow.



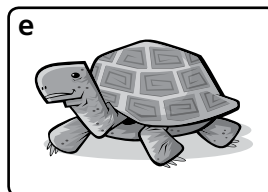
**3** This animal has wings, claws and a beak.



**4** This animal is very big. It has a long nose and big ears.



**5** This animal has scales and sharp teeth. It doesn't have legs.





**Unit Test**

Name: \_\_\_\_\_

Class: \_\_\_\_\_

**2 Read and circle.**

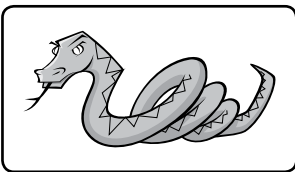
Score:



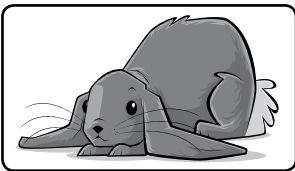
1 This animal has a long / short tail.



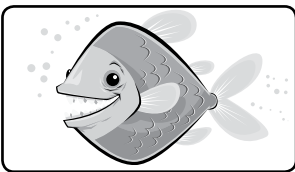
2 This animal has scales / fur.



3 This animal doesn't have / has legs.



4 This animal has long / short ears.



5 This animal has scales / wings.

Score:

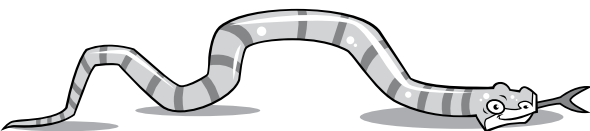


**3 Read and write.**

fur ~~tail~~ teeth legs reptile long



This animal is a mammal. It has a long 1 tail and sharp 2 \_\_\_\_\_. It can run very fast. It has orange and black 3 \_\_\_\_\_, too.



This animal is a 4 \_\_\_\_\_. It has a 5 \_\_\_\_\_ body, but it doesn't have any 6 \_\_\_\_\_.



**Unit Test**

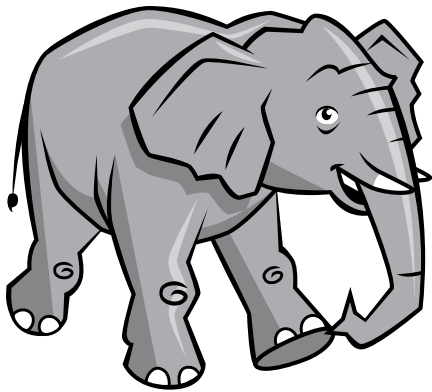
Name: \_\_\_\_\_

**Writing**

Class: \_\_\_\_\_

**4 Look and write.**

Score:



- 1 a big body
- 2 sharp claws
- 3 big ears
- 4 big eyes
- 5 long whiskers

1 It has a big body.

4 \_\_\_\_\_

2 It doesn't have \_\_\_\_\_.

5 \_\_\_\_\_

3 \_\_\_\_\_

**5 Order and write. Answer.**

Score:



1 wings? / have / Does / it

Does it have wings?

Yes, it does.

2 it / Does / ears? / big / have /

\_\_\_\_\_

\_\_\_\_\_

3 Does / have / it / feathers?

\_\_\_\_\_

\_\_\_\_\_

4 big / it / eyes? / Does / have

\_\_\_\_\_

\_\_\_\_\_

5 sharp / have / Does / it / claws?

\_\_\_\_\_

\_\_\_\_\_

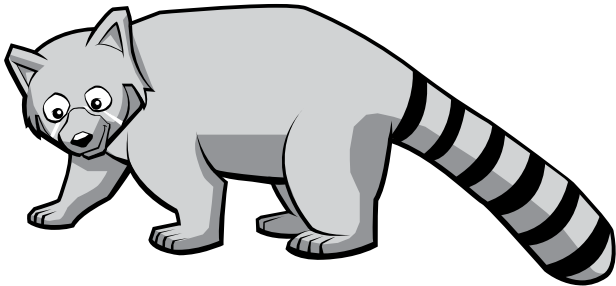


**Unit Test**

Name: \_\_\_\_\_

Class: \_\_\_\_\_

**6** Write about the red panda.



mammal ✓

fur ✓

Score:  5

small nose ✓

long tail ✓

four legs ✓

wings ✗

The red panda is a mammal. It has \_\_\_\_\_

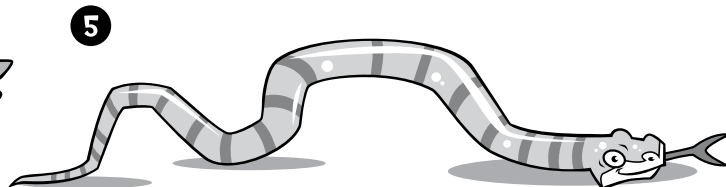
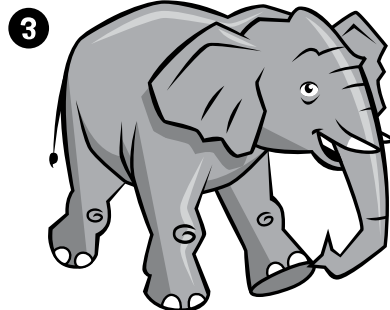
\_\_\_\_\_

\_\_\_\_\_

**Speaking and Listening**

Describe each animal. Guess the animal. Ask *Is it ...? Does it have ...?*

Score:  10



Total test score:  36